

Report of North East Divisional Community Safety Partnership

Report to Inner East Area Committee

Date: 20th June 2013

Subject: North East Divisional Community Safety Partnership Annual Report

Are specific electoral Wards affected?	<input checked="" type="checkbox"/> Yes	<input type="checkbox"/> No
If relevant, name(s) of Ward(s): Gipton and Harehills Burmantofts and Richmond Hill Killingbeck and Seacroft		
Are there implications for equality and diversity and cohesion and integration?	<input type="checkbox"/> Yes	<input checked="" type="checkbox"/> No
Is the decision eligible for Call-In?	<input type="checkbox"/> Yes	<input checked="" type="checkbox"/> No
Does the report contain confidential or exempt information?	<input type="checkbox"/> Yes	<input checked="" type="checkbox"/> No
If relevant, Access to Information Procedure Rule number: Appendix number:		

Summary of main issues

1. To update ward members of the overall performance of the North East Divisional Community Safety Partnership and Neighbourhood Policing Teams for 2012/13.
2. To provide an overview of the work undertaken by the partnership within the locality to reduce crime and disorder.

Recommendations

3. The Area Committee is asked to note the contents of this report of the North East Divisional Community Safety Partnership.
4. Members are asked to continue supporting the Divisional Community Safety Partnership in relation to prioritising the new Safer Leeds Priorities and tackling Burglary Dwelling during 2013/14 through partnership work at neighbourhood level.

1. Purpose of this report

The report will focus on the following key issues:

- Update members on progress and outputs of the neighbourhood management tasking arrangements
- Report on thematic sub groups and activities
- Report on the performance of the North East Police Division and partnership
- Summary of ward crime statistics, public confidence and user satisfaction
- Report on multi agency 'Operation Champions'
- Report on agreed community initiatives funded via Proceeds of Crime confiscations (POCA)

2. Background information

- 2.1 This report provides Members of the Area Committee with an overview of the performance of the North East Divisional Community Safety Partnership and ward based Neighbourhood Policing Teams. It will also include details of the key initiatives that have been delivered in local communities to reduce crime and disorder. The report focuses upon the period 1st April 2012 to 31st March 2013.

3. Main issues

3.1 Performance Framework

- 3.2 The Divisional Community Safety Partnership (DCSP) will continue to develop activity and management performance against strategic outcomes of the city, defined by The Safer and Stronger Communities Board Partnership plan 2011-2015 which will focus on delivering the following strategic priorities:

- Reducing crime levels and its impact across Leeds
- Effectively Tackle and Reduce Anti-social behaviour in our Communities

- 3.3 Safer Leeds has six key priorities for 2013/14:

- Reducing burglary and anti-social behaviour tackling domestic abuse
- Tackling domestic abuse
- Reducing re-offending
- Improving our understanding of child sexual exploitation
- Dealing with dangerous 'Legal Highs' and cannabis
- Strengthening community engagement and support to victims

- 3.4 Attached is an updated structure chart for the North East Divisional Community Safety Partnership (see Appendix A) with details of the relevant lead officers. The structure is continuously reviewed to ensure delivery against new priorities.

4. Operation Champion

- 4.1 A number of 'multi agency operation days of action' have been carried out across the ward during 2012/13 and have been based around themes and deployed into areas of concern. We will continue to deliver operations during 2013/14 with a minimum requirement of four operations per year per Neighbourhood Policing Team.

5. Operation Outwork

- 5.1 As the scrap metal market maintains its consistently high prices the theft of metal continues to be a problem across the North East Leeds Policing area. Whether it is cable theft, burglary other, general theft non specifics or full blown burglary dwellings the target is often metal in order for the criminals to cash in.
- 5.2 Joint partnership operations between Neighbourhood Policing Teams and the Environmental Locality Team were delivered on a monthly basis and will continue through 2013. These operations include setting up road checks and routine stopping of waste carrier vehicles in order to complete checks on such vehicles. The Police staff conduct normal police checks on all passengers and pay attention to the condition of such vehicles alongside East North East Environmental Locality team staff that provide trained expertise regarding waste carrier licence/rules and conditions.

6. POCA

- 6.1 The North East Division allocated a further £29,000 and carried forward £9187.85 from 11/12 totalling £38,197.85 funding confiscated from criminals under the Proceeds of Crime Act to the Divisional Community Safety Partnership during 2012/13 to support local groups with community projects/activities. In total, across the whole division, we approved and funded 123 applications and spent £33,243. We continue to receive positive feedback from the community. Information regarding the awards continues to be advertised in the Neighbourhood Management / Neighbourhood Policing Team newsletters and on the police Neighbourhood Policing Team websites. We will be continuing the scheme into 2013/14 (Appendix B provides a summary of projects funded in the Inner North East Area).

7. Confidence and Satisfaction

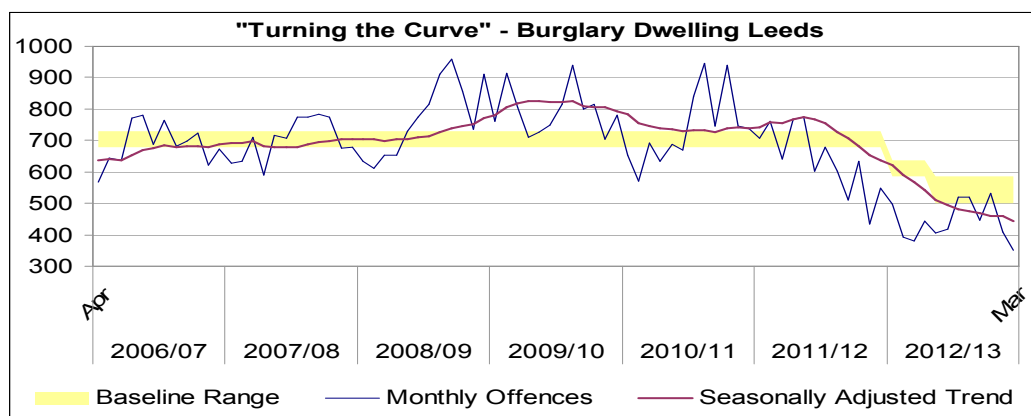
7.1 North East Leeds continues to have the highest public confidence in local policing during 2012/13 at 60.5% (March 2013) compared with the West Yorkshire force average of 53.9%.

7.2 Operation Confidence continued during 2012/13 with two editions and is a contributing factor to the high rates of public confidence. The North East Division produces 11 neighbourhood management newsletters detailing partnership activity around crime and grime within the Neighbourhood Policing Team and delivers to 128,000 households. The initiative has been funded by North East Police Division, East North East Homes, Safer Leeds Partnership and Aire Valley Homes, we are anticipating securing funding for 2013/14 for a further two editions whilst investigating other options alongside social media such as Facebook and Twitter to improve engagement with local communities.

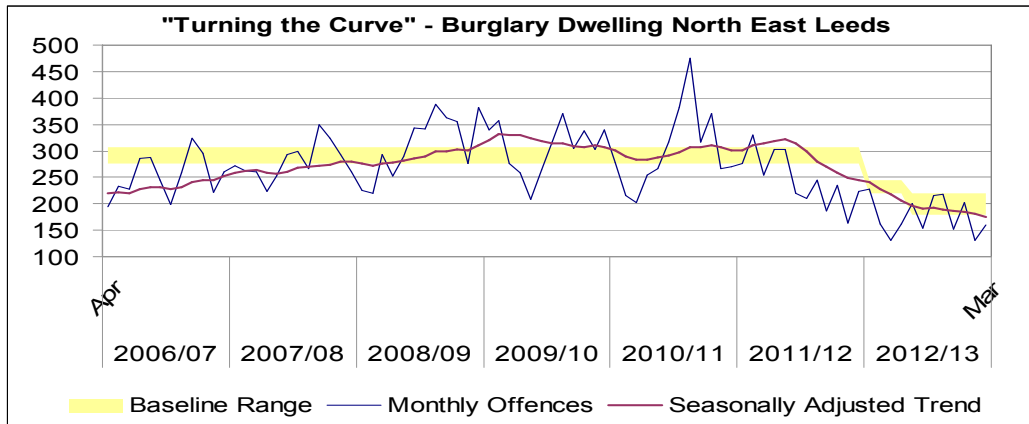
8. Burglary Dwelling

8.1 Burglary Dwelling remains a key priority in relation to allocation of resources both staffing and financial. Tackling burglary dwelling remains the key priority within the division and across the whole of Leeds, we are working closely with Safer Leeds Strategic Burglary Group and partner agencies to maximise opportunities for closer working, sharing good practise and continue to deliver initiatives at a local neighbourhood level.

8.2 Overall a very successful year in 2012/13 there were 5,305 recorded domestic burglaries in Leeds, down 30.8% when compared with the previous year equivalent to 2357 fewer victims.



8.3 Overall year to date burglary offences for North East Leeds are down 28.35 % on the same period last year (833 less offences).



9. Ward Risk Matrix

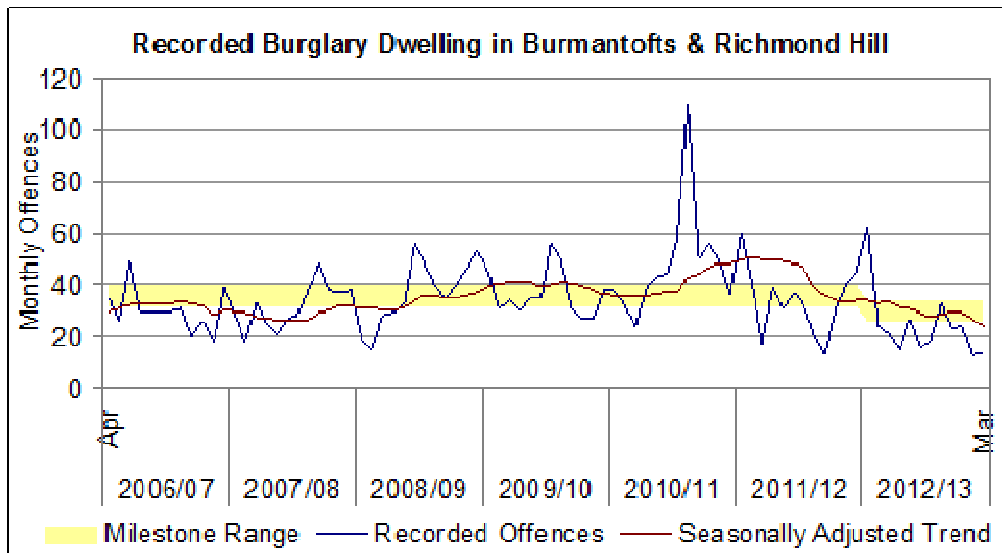
9.1 During 2012/13 there were nine strategic localities of concern. The inner east area committee area have all three wards as strategic localities of concern, Burmantofts & Richmond Hill alongside Gipton & Harehills are in the top three wards across the city. The strategic burglary group are currently reviewing best practise in relation to partnership work and reviewing the localities of concern for 2013/14. The Divisional Community Safety Partnership have recommended all three wards to be the focus for additional partnership work on reducing burglary dwelling during 13/14 from the Inner East Committee Area.

Ward	Apr-12	May-12	Jun-12	Jul-12	Aug-12	Sep-12	Oct-12	Nov-12	Dec-12	Jan-13	Feb-13	Mar-13	12 Month Total	12 Month % Change	3 Month Change
Hyde Park & Woodhouse	Very High Concern	Very High Concern	Very High Concern	Very High Concern	Very High Concern	Very High Concern	Very High Concern	Very High Concern	Very High Concern	Very High Concern	Very High Concern	Very High Concern	328	-45.1%	-43.7%
Burmantofts & Richmond Hill	Very High Concern	Very High Concern	Very High Concern	Very High Concern	Very High Concern	Very High Concern	Very High Concern	Very High Concern	Very High Concern	Very High Concern	Very High Concern	Very High Concern	289	-29.0%	-31.1%
Gipton & Harehills	Very High Concern	Very High Concern	Very High Concern	Very High Concern	Very High Concern	Very High Concern	Very High Concern	Very High Concern	Very High Concern	Very High Concern	Very High Concern	Very High Concern	280	-26.9%	-1.4%
Armley	Very High Concern	Very High Concern	Very High Concern	Very High Concern	Very High Concern	Very High Concern	Very High Concern	Very High Concern	Very High Concern	Very High Concern	Very High Concern	Very High Concern	252	-35.4%	-13.8%
Headingley	Very High Concern	Very High Concern	Very High Concern	Very High Concern	Very High Concern	Very High Concern	Very High Concern	Very High Concern	Very High Concern	Very High Concern	Very High Concern	Very High Concern	230	-43.5%	-61.4%
Roundhay	Very High Concern	Very High Concern	Very High Concern	Very High Concern	Very High Concern	Very High Concern	Very High Concern	Very High Concern	Very High Concern	Very High Concern	Very High Concern	Very High Concern	225	0.0%	-20.3%
Killingbeck & Seacroft	Very High Concern	Very High Concern	Very High Concern	Very High Concern	Very High Concern	Very High Concern	Very High Concern	Very High Concern	Very High Concern	Very High Concern	Very High Concern	Very High Concern	221	-38.8%	-8.8%
Middleton Park	Very High Concern	Very High Concern	Very High Concern	Very High Concern	Very High Concern	Very High Concern	Very High Concern	Very High Concern	Very High Concern	Very High Concern	Very High Concern	Very High Concern	215	11.4%	-21.0%
Beeston & Holbeck	Very High Concern	Very High Concern	Very High Concern	Very High Concern	Very High Concern	Very High Concern	Very High Concern	Very High Concern	Very High Concern	Very High Concern	Very High Concern	Very High Concern	205	-3.3%	-22.2%
Kirkstall	Very High Concern	Very High Concern	Very High Concern	Very High Concern	Very High Concern	Very High Concern	Very High Concern	Very High Concern	Very High Concern	Very High Concern	Very High Concern	Very High Concern	203	-43.3%	52.3%
Cross Gates & Whinmoor	Very High Concern	Very High Concern	Very High Concern	Very High Concern	Very High Concern	Very High Concern	Very High Concern	Very High Concern	Very High Concern	Very High Concern	Very High Concern	Very High Concern	182	-38.9%	-10.0%
Weetwood	Very High Concern	Very High Concern	Very High Concern	Very High Concern	Very High Concern	Very High Concern	Very High Concern	Very High Concern	Very High Concern	Very High Concern	Very High Concern	Very High Concern	182	-25.7%	7.5%
Bramley & Stanningley	Very High Concern	Very High Concern	Very High Concern	Very High Concern	Very High Concern	Very High Concern	Very High Concern	Very High Concern	Very High Concern	Very High Concern	Very High Concern	Very High Concern	181	-56.9%	122.9%
Temple Newsam	Very High Concern	Very High Concern	Very High Concern	Very High Concern	Very High Concern	Very High Concern	Very High Concern	Very High Concern	Very High Concern	Very High Concern	Very High Concern	Very High Concern	179	-27.8%	-20.3%
Farnley & Wortley	Very High Concern	Very High Concern	Very High Concern	Very High Concern	Very High Concern	Very High Concern	Very High Concern	Very High Concern	Very High Concern	Very High Concern	Very High Concern	Very High Concern	175	-39.7%	-23.3%
City & Hunslet	Very High Concern	Very High Concern	Very High Concern	Very High Concern	Very High Concern	Very High Concern	Very High Concern	Very High Concern	Very High Concern	Very High Concern	Very High Concern	Very High Concern	170	-17.5%	2.2%
Pudsey	Very High Concern	Very High Concern	Very High Concern	Very High Concern	Very High Concern	Very High Concern	Very High Concern	Very High Concern	Very High Concern	Very High Concern	Very High Concern	Very High Concern	170	-30.6%	7.3%
Calverley & Farsley	Very High Concern	Very High Concern	Very High Concern	Very High Concern	Very High Concern	Very High Concern	Very High Concern	Very High Concern	Very High Concern	Very High Concern	Very High Concern	Very High Concern	167	-32.1%	-35.0%
Chapel Allerton	Very High Concern	Very High Concern	Very High Concern	Very High Concern	Very High Concern	Very High Concern	Very High Concern	Very High Concern	Very High Concern	Very High Concern	Very High Concern	Very High Concern	164	-46.9%	-18.8%
Moortown	Very High Concern	Very High Concern	Very High Concern	Very High Concern	Very High Concern	Very High Concern	Very High Concern	Very High Concern	Very High Concern	Very High Concern	Very High Concern	Very High Concern	154	-35.3%	-50.0%
Alwoodley	Very High Concern	Very High Concern	Very High Concern	Very High Concern	Very High Concern	Very High Concern	Very High Concern	Very High Concern	Very High Concern	Very High Concern	Very High Concern	Very High Concern	138	-15.3%	-32.4%
Horsforth	Very High Concern	Very High Concern	Very High Concern	Very High Concern	Very High Concern	Very High Concern	Very High Concern	Very High Concern	Very High Concern	Very High Concern	Very High Concern	Very High Concern	127	-18.6%	-6.1%
Morley North	Very High Concern	Very High Concern	Very High Concern	Very High Concern	Very High Concern	Very High Concern	Very High Concern	Very High Concern	Very High Concern	Very High Concern	Very High Concern	Very High Concern	121	-14.2%	34.6%
Adel & Wharfedale	Very High Concern	Very High Concern	Very High Concern	Very High Concern	Very High Concern	Very High Concern	Very High Concern	Very High Concern	Very High Concern	Very High Concern	Very High Concern	Very High Concern	105	-34.8%	10.0%
Harewood	Very High Concern	Very High Concern	Very High Concern	Very High Concern	Very High Concern	Very High Concern	Very High Concern	Very High Concern	Very High Concern	Very High Concern	Very High Concern	Very High Concern	91	4.6%	26.3%
Rothwell	Very High Concern	Very High Concern	Very High Concern	Very High Concern	Very High Concern	Very High Concern	Very High Concern	Very High Concern	Very High Concern	Very High Concern	Very High Concern	Very High Concern	88	-11.1%	47.4%
Morley South	Very High Concern	Very High Concern	Very High Concern	Very High Concern	Very High Concern	Very High Concern	Very High Concern	Very High Concern	Very High Concern	Very High Concern	Very High Concern	Very High Concern	82	-24.8%	-34.4%
Wetherby	Very High Concern	Very High Concern	Very High Concern	Very High Concern	Very High Concern	Very High Concern	Very High Concern	Very High Concern	Very High Concern	Very High Concern	Very High Concern	Very High Concern	78	6.8%	125.0%
Otley & Yeadon	Very High Concern	Very High Concern	Very High Concern	Very High Concern	Very High Concern	Very High Concern	Very High Concern	Very High Concern	Very High Concern	Very High Concern	Very High Concern	Very High Concern	69	-20.7%	-42.9%
Garforth & Swillington	Very High Concern	Very High Concern	Very High Concern	Very High Concern	Very High Concern	Very High Concern	Very High Concern	Very High Concern	Very High Concern	Very High Concern	Very High Concern	Very High Concern	64	-28.9%	83.3%
Ardsley & Robin Hood	Very High Concern	Very High Concern	Very High Concern	Very High Concern	Very High Concern	Very High Concern	Very High Concern	Very High Concern	Very High Concern	Very High Concern	Very High Concern	Very High Concern	63	-14.9%	-33.3%
Guiseley & Rawdon	Very High Concern	Very High Concern	Very High Concern	Very High Concern	Very High Concern	Very High Concern	Very High Concern	Very High Concern	Very High Concern	Very High Concern	Very High Concern	Very High Concern	53	-39.1%	7.1%
Kippax & Methley	Very High Concern	Very High Concern	Very High Concern	Very High Concern	Very High Concern	Very High Concern	Very High Concern	Very High Concern	Very High Concern	Very High Concern	Very High Concern	Very High Concern	50	-35.1%	-9.1%

10. Burglary Dwelling – Inner East Wards

10.1 A successful year in relation to reduction of overall burglary dwelling within all the Inner East Wards, achieving a significant reduction. The burglary action plans for Killingbeck and Seacroft , Burmantofts and Richmond Hill were developed with key partner agencies was delivered during 12/13 and incorporated key strands including offender management, stolen goods market, reducing victimisation and crime reduction. Significant financial investment was provided by East North East Homes to continue the target hardening initiative of ALMO properties alongside allocations from area committee to support security improvements to vulnerable tenants in the private rented sector and owner occupiers. An outcome based accountability session was held in Feb 2013 for the Gipton / Harehills ward, with partnership activity commencing in April 2013.

10.2



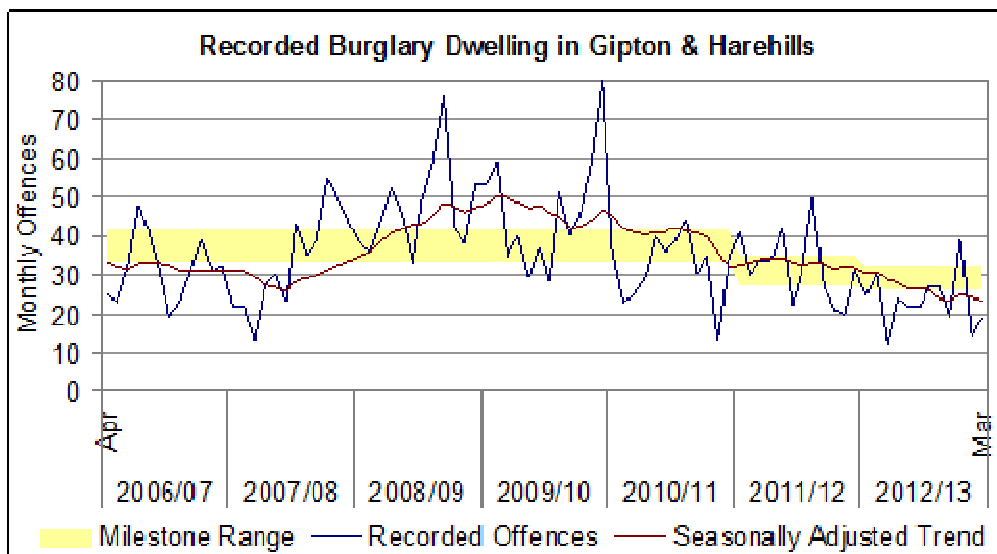
10.3 **Progress April 2012 to March 2013**

10.4 Out-turn was 209 offences, falling in 2012/13 compared with 2011/12. The year to date average is 24 offences per month and attained the milestone level 2.

Month	Offences	Average To Date
Apr-12	62	62
May-12	24	43
Jun-12	21	36
Jul-12	15	31
Aug-12	27	30
Sep-12	16	28
Oct-12	18	26
Nov-12	33	27
Dec-12	23	27
Jan-13	24	26
Feb-13	13	25
Mar-13	14	24
Year to Date	290	24

Month	Cumulative 2012-13	Cumulative 2011-12	Change
Apr	62	60	2
May	86	100	-14
Jun	107	117	-10
Jul	122	156	-34
Aug	149	187	-38
Sep	165	224	-59
Oct	183	256	-73
Nov	216	277	-61
Dec	239	290	-51
Jan	263	321	-58
Feb	276	362	-86
Mar	290	407	-117
-29% Change Year to Date			

10.5 Gipton & Harehills



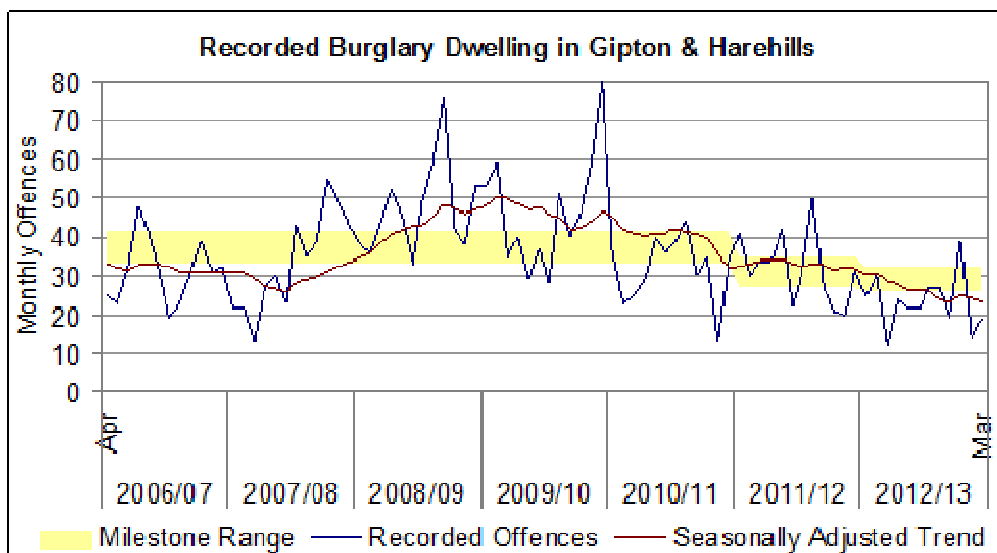
10.6 Progress April 2012 to March 2013

10.7 Out-turn was 280 offences, falling by 27% in 2012/13 compared with 2011/12. The year to date average is 23 offences per month and has attained the Milestone 2 level.

Month	Offences	Average To Date
Apr-12	25	25
May-12	30	28
Jun-12	12	22
Jul-12	24	23
Aug-12	22	23
Sep-12	22	23
Oct-12	27	23
Nov-12	27	24
Dec-12	19	23
Jan-13	39	25
Feb-13	14	24
Mar-13	19	23
Year to Date	280	23

Month	Cumulative 2012-13	Cumulative 2011-12	Change
Apr	25	41	-16
May	55	71	-16
Jun	67	105	-38
Jul	91	139	-48
Aug	113	181	-68
Sep	135	203	-68
Oct	162	234	-72
Nov	189	284	-95
Dec	208	311	-103
Jan	247	332	-85
Feb	261	352	-91
Mar	280	383	-103
-27% Change Year to Date			

10.8 Killinbeck & Seacroft



10.9 Progress April 2012 to March 2013

10.10 Out-turn was 221 offences, falling by 39% in 2012/13 compared with 2011/12. The year to date average is 18 offences per month and has attained the Milestone 2 level.

Month	Offences	To Date
Apr-12	15	15
May-12	15	15
Jun-12	13	14
Jul-12	14	14
Aug-12	17	15
Sep-12	17	15
Oct-12	30	17
Nov-12	18	17
Dec-12	20	18
Jan-13	27	19
Feb-13	21	19
Mar-13	14	18
Year to Date	221	18

Month	Cumulative 2012-13	Cumulative 2011-12	Change
Apr	15	25	-10
May	30	55	-25
Jun	43	92	-49
Jul	57	136	-79
Aug	74	170	-96
Sep	91	197	-106
Oct	121	223	-102
Nov	139	254	-115
Dec	159	295	-136
Jan	186	328	-143
Feb	207	349	-142
Mar	221	361	-140
-39% Change Year to Date			

11. Most Active / Amber Nominals / Burglary Group

11.1 The group continues to meet on a six weekly basis and looks at how best to manage individuals offending behaviour through offering support through targeted services or taking enforcement action. The youth offending service have widened their remit to offer voluntary support to those wishing to engage outside of the criminal justice system. We have developed close working relationships with targeted services and refer into guidance and support structures.

12. Neighbourhood Management Tasking Key Achievements 2012/13

12.1 The eleven neighbourhood management tasking teams continue to meet six weekly and are still firmly embedded into agencies day to day business. Members continue to be invited to attend and support meetings.

12.2 This is not an exhaustive list of activities but includes key achievements from each of the neighbourhood management tasking teams within the Inner East area.

13. Burmantofts and Richmond Hill

- **Burglary Reduction Initiative** - Fortnightly mini operation champions took place between the Neighbourhood Policing Team, East North East Homes and Leeds Anti-Social Behaviour Unit. There have been over 1200 properties in hot spot areas visited and offered additional target hardening and crime prevention advice.
- **Kitsons, Dents, Oxleys and Clarks bin solutions** – The Area Support team led a project to implement a bin solution for the area to improve long standing refuse collection issues. Each property was provided with two wheeled bins which had a bin sticker placed on each which was designed by pupils of Richmond Hill Primary School. An environment event was held at the primary school for residents to ask any questions they may have around the new bin collections. Fines already in the process of being issued to residents who are not putting their bins away and keeping the area clean.

- **Live on the Drive** - The third Live on the Drive event took place on Saturday 1st September 2012. This is a free event for young people living in the East End Park area and takes place on East Park Drive. There were a number of fun activities including face painting, bouncy castles, hook a duck, coconut shy and a community barbeque. Members of the Burmantofts & Richmond Hill Neighbourhood Policing Team played street hockey and basketball with young people from the area and nearly 400 people were in attendance. The event was organised in partnership with Community Unity, LCC East North East Area Support Team, BRH Neighbourhood Policing Team and East North East Homes. Funding for the event was provided through Inner East Area Committee and proceeds of crime funding.
- **Cherry Row** –Joint work has been undertaken with the East North East and South East Locality Teams to improve Cherry Row. Inner East Area Committee funded improvements to the alley way for commercial bin storage. The South East Locality Team are now taking enforcement action against commercial businesses if they aren't complying with the new arrangements. The East North East Locality Team are litter picking / cleaning the area more frequently.
- **Operation Champion** - led by staff from East North East Homes targeting anti-social behaviour and drug related issues in tower blocks in the Burmantofts area.
- Environmental Improvement Zone work has continued in the Bellebrookes and Nowells areas with a number of residents receiving fines for non-compliance of notices
- Problem ginnels in Osmondthorpe have been cleared by Probation Service's Community Payback Team.
- Funding has been provided through the Tasking budget to improve problematic alley gate locks in the Nowells and a contribution has been made towards CCTV in the Rookwoods area.
- The Designated Public Place Order (DPPO) continues to be enforced across the area and local complaints have significantly reduced since its implementation.
- Partnership Metal theft days of action, continue in the ward with regular visits to the scrap metal dealers (11.2.13 and 27.3.13).
- Local drug dealers have been targeted with partnership agencies, as part of Operation Sugarloaf, numerous offenders charged with drug dealing.
- Three brothers whom have caused persistent problems in relation to crime across the ward have been injunctioned out of the area until July 2017.
- Operation Champion held on 11th March 2013 focussing on loan shark activity in the Rookwoods and Cross Green area.
- East Park Grove Task Group established to work with private landlords to address their concerns about crime and grime issues.
- Reinforced alley gate locks and closing devices installed on Back Nowell Place, due to on-going issues of locks being damaged on the street.
- New wheelie bins including house numbers provided to all houses on Bellbrookes to assist with environmental enforcement action.
- 8/3/13 - Crime reduction advice given by neighbourhood policing team at The International Women's day.

14. **Killingbeck and Seacroft**

- Multi-agency work on the Poole Estate has successfully identified 6 anti-social behaviour (ASB) offenders who have been addressed jointly by schools, Leeds Anti-Social Behaviour Unit and Police. Licensing enforcement at a local Working Men's Club has also contributed to the reduction in ASB and residents report the situation has vastly improved.

- Off Road motorcycles continue to be seized from offenders in the ward.
- Police and Partner agencies were nominated for a Force Award for their actions in safeguarding a Seacroft family and reintegrating them back into the community.
- Leeds Watch cameras continue to make a real difference in South Seacroft and contribute to the reduction in ASB and crime.
- A further Leeds Watch camera is planned for the Hawkshead Crescent / Borrowdale Terrace
- Burglar resident in Almo property on Kentmere Rise had tenancy terminated following imprisonment.
- Burglar resident in Almo property on Mardale Crescent had tenancy terminated following charge.
- Priority criminal resident in Almo property on Moresdale Lane had tenancy terminated following imprisonment.
- Operation Champion completed tackling ASB and criminal damage on the Foundry Mills.
- Littering at South Parkway Shops tackled through visible PCSO patrols and East North East Locality team taking enforcement action against shop owners and liaison with Leeds East Academy.
- Highways and environmental improvements undertaken on Tarnside Drive which has resulted in the reduction of ASB. The improvements were funded by East North East Homes Area Panel.
- Target hardening initiatives delivered on 20 hot spot streets for burglary dwelling involving the Neighbourhood Policing Team, CASAC and Leeds Anti-Social Behaviour Team.
- Environmental enforcement work carried out in partnership with East North East Homes, East North East Locality Team and the Neighbourhood Policing Team regarding waste in gardens and high hedges on the top ten burgled streets.
- An 'on street detached project' delivered across the ward in hotspot areas for anti-social behaviour and burglary dwelling to engage with young people at risk of engaging in criminal activity and divert them into youth provision and support services.

15. Gipton

- Operation Champion took place in the St Wilfrids & Easterly new Build areas focussing on burglary dwelling.
- Tasking funded an alley gate to the side of Amberton Shops.
- Three housing cautions served on East North East Homes tenants for growing cannabis
- Operation Champion themed "operation confidence" was completed on Oakland's estate where police confidence is seen to be low.
- Alley gate keys purchased for the PCSO teams to enable them to close and lock alley gates whilst on their patrols.
- Coldcotes shops designated an EIZ to combat litter and fly tipping and additional litter bins installed.
- 10 dog fouling signs agreed for the area and a responsible dog owner day held in Harehills Park.
- A range of diversionary activities funded through community first to help reduce ASB / Crime and increase community confidence, which included: martial arts defence for Women, football, basketball, dance classes.

- PCSO's worked with St Nicholas school to design road safety posters aimed at reducing speed.
- A covert drugs operation to identify ring leaders of drug dealers and to instigate relevant charges on individuals and tenancy action where appropriate.
- In response to ASB complaints from multi storey flats, 6 prohibition notices served on youths, locking mechanism updated to prevent illegal entry in response to shoplifting and ASB complaints at Tesco's.
- Burglary OBA action plan is being implemented by all partners.

16. Harehills

- Funded 6 anti-dog fouling signs and held a multi-agency responsible dog ownership day at Harehills Park in response to complaints regarding dog fouling. A large number of dogs were chipped at the event and PCSO's and dog wardens did joint patrols to speak to owners about their responsibilities. Partners involved included Neighbourhood Policing Team, East North East locality team, The Dogs Trust, Area Support and East North East Homes
- An Operation Champion took place in the Hovinghams & Dorsets to coincide with the launch of the Environmental Improvement zones. Partner agencies conducted door to door visits and issued questionnaires and perception surveys. One truant was found and sent back to school on the day.
- An Olympic Torch event was coordinated to coincide with the torch passing through Harehills. Over 2000 people attended and got involved with family activities and a range of sporting tasters. Community Spirit in Harehills was commended in the Yorkshire Evening Post.
- In response to resident complaints re ASB, litter and dog fouling at Banstead Park, new litter bins and dog fouling signs installed, youth services approached young people to encourage into their provision and a Responsible Dog Owner day planned.
- In response to reports of vandalism & anti-social behaviour at Harehills Park. The bowling green wall was repaired by probation, LASBT visited the complainant and letters were dropped in the area to establish any other issues. The East North East Locality Team sent warning letters to rugby and football clubs who use park on a weekend to clear up litter after themselves, the situation appears to have improved.
- A range of summer holiday activities put on throughout full six weeks in visible public spaces as an ASB deterrent. Multi sports at Ashton Park particularly successful, with large numbers turning up to play football. Discussions on-going to continue this on a regular basis throughout term time.
- As part of the launch of the designated public place area, The Youth Service health bus was brought to Ashton Park. Football sessions were held on the park and young people invited on to the health bus to discuss dangers of alcohol and other health issues.
- Alley gate keys purchased for the PCSO teams to be able to close and lock alley gates whilst on their patrols to try combat the issue of them being left open regularly.
- The Shisha bar on Roundhay Road was served a notice to close under planning legislation for breaching their opening hours. Planning conditions were adhered to and the premises reopened however they have now been fined £5,000 for allowing smoking in a public place. There have been on-going issues relating to antisocial behaviour in this area.

- Children's Services porta cabin opened on an evening during Ramadan as a drop in youth club for young people causing ASB between the hours of 10pm-1am. This was staffed by the Neighbourhood Policing Team Youth Services.
- An Operation Champion took place on the Sandhurst & Dorsets on the 8th March 2013. The operation included carrying out an environmental visual audit looking for burglary reduction opportunities, CASAC fitting sash jammers, raising awareness of the environmental improvement zones. LASBT and environmental enforcement visits, door knocking to encourage reporting of anti-social behaviour. Operation Confidence leaflets were delivered to residents alongside information around youth service activities and Keep Harehills Tidy Campaign.
- **Keep Harehills Tidy-** The East North East Locality Team, West Yorkshire Police, Ward Councillors and East North East Area Support established a meeting of residents to work alongside statutory services and take responsibility for their neighbourhood. A group of 10 residents have now been established with a chair and secretary, a high publicity launch event and leafleting campaign is planned to encourage more people to join the campaign and promote a cleaner environment.
- Removed illegally placed containers from behind shops on Roundhay Road working with East North East Homes and Locality Team.
- Harehills Traders - The Neighbourhood Policing Team, Community Safety, LCC Planning, LCC Highways, LCC Regeneration, Councillors and Area Support met with a group of local traders to address a number of complaints in the area which cut across all areas of work. An action plan has been put together to try to tackle the complaints and it is hoped that the Traders will establish themselves as some form of 'Town Team' (with our support) going forward.

17. Thematic Sub Groups and Activities

18. Designated Public Place Order – Harehills

- 18.1 A report setting out the proposals for a Designated Public place order for the area of Harehills was taken to Leeds City Councils Licensing Panel on 26th June 2012 outlining the legal framework, summary of evidence and the consultation undertaken. The order was granted and came into force on the 1st August 2012. (Appendix C illustrates the designated area)
- 18.2 Designated Public Place Orders (DPPOs) are made under the Criminal Justice and Police Act 2001. Under the Act, the Council can, by Order (or a series of Orders), designate public places within which it is an offence to consume alcohol after being requested by a Police Constable or a Police Community Support Officer (PCSO) not to do so. An Officer can ask any person to surrender alcohol or open alcohol containers if the Officer reasonably believes the person is, has been or intends to consume alcohol in that place. In due course, wardens will be accredited to exercise these powers. Penalties for this offence include a penalty for disorder (PND) £50 or arrest and prosecution for a level 2 fine, maximum of £500. Bail conditions can be used to stop the individual from drinking in the public place pending prosecution for the offence. The legislation does not ban the drinking of alcohol in Designated Public Places, and therefore it **does not** prohibit drinking alcohol in authorised street cafes and at authorised public entertainment events in

public areas. Legislation is designed to reduce anti-social street drinking either during the day (typically street users of alcohol and other substances) or in respect of night-time issues such as people drinking in the street and on the way to and from licensed areas or premises, e.g. in the queue for a club, having left a public house or in a fast food queue.

- 18.3 Section 26 of the Violent Crime Reduction Act 2006 came into force on 6th April 2007. It amended the Criminal Justice and Police Act 2001. Prior to this amendment pubs and clubs that have a licence to sell or supply alcohol under the Licensing Act 2003 could not form part of the DPPO. These premises would include public spaces licensed by local authorities for alcohol and regulated entertainment. This led to a conflict between the local authorities desire to licence public spaces for community events and the desire to use DDPOs to tackle anti-social drinking. This conflict was rectified by the amendment. There are no public places licensed by the Local Authority within the proposed area.
- 18.4 Under the amendment, premises where local authorities are permitted to sell or supply alcohol or premises that are occupied or managed on behalf of local authorities, for the sale and supply of alcohol will be excluded from a DPPO. The exclusion will only last while the premises are in use and for 30 minutes following the last supply/sale of alcohol. At all other times the premises will be subject to the DPPO.
- 18.5 The Neighbourhood policing team continue to enforce the designated public place order and frequently remove alcohol from persons on the street. To date over 80 different persons have had alcohol confiscated and there have been no arrests or prosecutions where persons have refused to surrender their alcohol.

19. **CCTV – Seacroft South**

- 19.1 A new CCTV scheme was installed by Leeds Watch into the South Seacroft Area during the summer of 2012 comprising of nine new cameras in the locations highlighted below. The cameras were located in hot spot areas, the streets were selected from analysis of reported crimes and anti-social behaviour. The capital costs of the project was funded by East North East Area Panel and East North Homes and revenue costs for the next 5 years were supported by ward councillors in the Inner East Area Committee. Early evaluation indicates that they have contributed towards reductions in crime and anti-social behaviour and provided reassurance to residents in the areas concerned. A full evaluation will be requested in August 2013 to compare overall figures with the previous year.
- Foundry Mill Street x 2
 - Hawkshead Crescent x 3
 - Moresdale Lane x 1
 - Dufton Approach x2
 - Ironwood Approach x 1

20. Off Road Bikes / West Yorkshire Police

- 20.1 The inner East Area Committee (June 2012) contributed towards the lease costs to retain 2 off road motorcycles within the division for a 12 months period.
- 20.2 The information below outlines some performance information and examples of successes in the Inner East Area Committee area:

July – September 2012

Stop searches: 12
Calls attended: 27
Section 59 warnings: 13
Vehicle seizures: 9
Arrests/Summons:8

October – December 2012

Stop searches: 11
Calls attended: 26
Section 59 warnings: 4
Vehicle seizures: 5
Arrests/Summons: 12

January – March 2013

Stop searches: 6
Calls attended: 41
Section 59 warnings: 8
Vehicle seizures: 6
Arrests/Summons: 5
Optimal patrols: 12
Cannabis warnings:1

- A well-known burglar drove by whilst using his mobile phone. He had no driving licence or insurance. His Vauxhall Astra was seized and crushed and he was reported for summons for careless driving.
- A man from Tarnside Drive decided to test his new purchase, a Kawasaki KX125 off road motorcycle out on the Fearnville Fields before riding home. He was met on his

street by the off road unit, yards from his garden.. His motorcycle was seized and he was sent back to court for having no licence or insurance.

- The area of the Rein and surrounding streets had become a hotspot. Following the seizure of three motorcycles in as many weeks in the area the local Neighbourhood Policing Team set up a multi-agency operation Champion with housing, Leeds Anti-Social Behaviour Unit and the courts Warrants Office. Officers from the unit caught a man who had tried to escape from a house with his pit bull terrier. He was stopped on Boggart Hill Drive with the dog. He was arrested on suspicion of possession of a dangerous dog. He received an £80 fine and his dog was found to be dangerous and destroyed. Officers were informed about an uninsured motorcycle which was taken from The Rein to an address on the Kentmeres in an attempt to avoid officers conducting the visits. The motorcycle was seized and destroyed.
- Whilst on patrol on a Saturday night officers spotted a Yamaha DTZ 125 on Boggart Hill. Neither the pillion nor the driver were wearing a helmet. On investigation they were both found to be in possession of cannabis and the driver was intoxicated He was arrested and charged with drink driving, no insurance and driving without a licence as well as possession of cannabis. After pleading guilty to being over twice the legal drink drive limit he was banned from driving for 18 months and fined £250. His motorcycle was also seized. The passenger received a caution for possession of cannabis.
- Responding to an incident on Torre Road officers simply had to follow the fresh tracks left in the grass which led to the owner and his new uninsured Quadzilla. His Quad was seized.
- A number of complaints were being received regarding nuisance motor cycles and riders gathering around the Poole Estate. The off road unit was deployed to the location and waited as all appeared very quiet. Within a few minutes of arrival a number of motorcycles arrived. Two riders were stopped and their motorcycles checked over. The rear tyre fell far below the legal limit on one of the bikes and the rider was issued a Fixed Penalty Ticket and a Section 59 warning notice due to his manner of riding. He was advised to take the motorcycle home. Approximately 45 minutes later the Off Road Unit returned to the estate to find that the same riders had also returned and were still riding in an anti-social manner. The rider noticed the Police and made off at speed. The Unit recognised the rider and motorcycle

from the earlier incident and attended his home address. Within an hour of the rider being issued a warning his motorcycle was seized.

- The unit was deployed in the K&S area of the division actively looking for a recently stolen moped that had been taken from Cross Gates. Owing to the versatility of the bike the officer was able to hide amongst the tree line at the bottom of North Parkway. After a brief wait a group of males appeared from the darkness pushing a moped and riding another motorcycle. The officer emerged from the trees causing the group to split. Although no arrests were made at the time, the youths were identified and the stolen moped recovered with minimal damage.
- While patrolling the BRH area, Officers in plain clothes noticed two males riding a Vespa type moped. On noticing the plain clothes officers, the riders attempted to evade them by riding along a pedestrian walkway under the railway lines. Due to vehicular access the officers were unable to follow. Due to the Units knowledge of the division's Ginnels and alleyways, they were able to intercept the males and the Vespa. This resulted in the arrest of a rider and recovery of the bike.
- A recently stolen Mercedes A Class Motor vehicle was spotted being driven by the Unit. This vehicle was followed resulting in the occupant's abandoning the car and running through a pedestrian access gate towards North Parkway. Fortunately the police motorcycle was able to pursue the occupants resulting in a number of arrests and the recovery of the stolen vehicle.
- A speeding BMW was stopped on Boggart Hill Drive trying to race with a Volvo. The driver was issued with a section 59 warning so if he drives in the same manner again his vehicle will be seized.

21. Hate Crime MARAC

21.1 The hate Crime Multi-Agency Risk Assessment Conference (HC MARAC) continues to meet monthly. The overall objectives of the group is to:

- Support and assist victims of hate crime in order to protect them and ensure that they are not re-victimised.
- Ensure that effective co-ordinated multi agency enforcement action is taken against perpetrators of hate crime to prevent their re-offending and to ensure successful prosecution outcomes at Court.
- Contribute to the "Hate crime reduction agenda in Leeds".

21.2 During 2012/13 we have received positive feedback from residents, exits surveys illustrate that they are happy with the response and support they have received from partner agencies.

21.3 Overall the Inner East area has shown a decrease of 7.8% in recorded hate crimes reported (see chart below)

INNER EAST		
Incidents	Change	% Change
166	-12	-7.8%

21.4 The chart below illustrates hate crimes by ward:

Burmantofts/Richmond Hill			Killingbeck & Seacroft			Gipton/Harehills		
Incidents	Change	% Change	Incidents	Change	% Change	Incidents	Change	% Change
44	2	4.8%	47	-7	-13.0%	75	-7	-8.5%

22. Domestic Violence MARAC

22.1 The North East Divisional MARAC continues to meet monthly to develop multi-agency interventions to support victims of domestic violence. Overall a very successful year in relation to reduction of repeat victimisation of cases managed through the MARAC.

23. Inner East Cluster

23.1 Inner East Cluster has adopted the whole cluster approach to address domestic violence in the area. They are working in partnership with Safer Leeds domestic violence team. A programme of training, support and awareness raising initiatives has taken place.

23.2 The overall aims were to:

- Raise awareness of domestic violence and impact on children and families
- Increase practitioner confidence to seek advice and support
- Increase knowledge of services in the area to access support

23.3 Local evidence that shows there is a need for this additional support:

- 30% of 81 cases (last 5 G & S meetings) have reported domestic violence occurrences.
- High number of referrals into Children's Social Work Services in relation to domestic violence

23.4 Work undertaken:

- DV awareness presentations delivered in 11 out of 15 schools

- DV full day training session delivered to Domestic Violence leads
- NSPCC assemblies delivered to KS2 & KS3 pupils in 11 out of 13 primary schools
- New Beginnings programme delivered in 4 schools (i.e. targeted work for children identified as being affected by DV)
- Blossoms DV women's support group for women affected by DV

23.5 The work is on-going and showing positive results, increasing staff confidence and prompting early responses to support children affected by domestic violence.

24 Harehills Primary Safe as Houses Programme

24.1 Domestic violence work is on-going in Harehills Primary School with the aim to improve safety at home for children. The programme has been run for the second year and once again began with a theatre workshop performance by the locally based Theatre in Education. The aim of Safe as Houses is to enable children to talk about situations that make them feel safe and unsafe, where to go for help and understand who they can talk to. The workshop themes are then taken up in the classrooms. Using the characters in the drama helps children to discuss difficult issues in a safe way that is not threatening to them. Parents were also invited to view the performance but uptake was disappointingly low.

25. Leeds Anti-Social Behaviour Team

25.1 LASBT data for 2012/13 has been drawn from on a total of 528 surveys from 1060 named victims (an overall response rate of 50%).

25.2 The charts below outline by ward the number of enquiries received, new cases opened and a summary of the legal outcomes.

LASBT Enquiries Received 2012/13	
Ward	Grand Total
Burmantofts & Richmond Hill	175
Killingbeck & Seacroft	151
Gipton & Harehills	210

LASBT New Cases Opened 2012/13	
Ward	Grand Total
Burmantofts & Richmond Hill	118
Killingbeck & Seacroft	113
Gipton & Harehills	86

LASBT Legal Outcomes 2012/13						
Ward	Adjourned	Injunction	Possession granted	Suspended Possession Order	Withdrawn	Grand Total
Burmantofts & Richmond Hill			2	5		7
Killingbeck & Seacroft			3	2		7
Gipton & Harehills	2			5	2	9

26. Ward Performance

Inner East

PersonWardCode	Q12 How satisfied are you with the overall service provided by the Leeds ASB Team?						Grand Total	% 'Satisfied' or 'Very Satisfied'
	Very Satisfied	Satisfied	Neither Satisfied Nor Dissatisfied	Dissatisfied	Very Dissatisfied			
Burmantofts and Richmond Hill	29	19	2	1	1	52	92.3%	
Gipton and Harehills	20	16			1	37	97.3%	
Killingbeck and Seacroft	25	19	4	1	2	51	86.3%	
Grand Total	74	54	6	2	4	140	91.4%	

27. Overall Performance of North East Divisional Community Safety Partnership and Ward crime statistics - MARCH 2013

28. Performance Headlines

- Total Crime across North East Police Division reduced by 10.6% (2,290 less crimes) during 2012/13 compared with the previous year, an improvement on the 7% reduction the previous year.
- Overall year to date offences for burglary dwelling across North East Leeds are down 28.35% on the same period last year (833 less offences).
- Overall crime across the Inner East area committee area has reduced 9.9 % (1000 less crimes).
- Highest confidence rate in local policing across West Yorkshire
- Reduction of overall serious acquisitive crime offences
- Reduced perception of ASB increasing in local areas
- Reduced levels of serious violent crime

29. Crime and ASB 2012/13

29.1 Overall a really successful year in relation to recorded crime and anti-social behaviour.

29.2 The below statistics show crime from 1st April 2012 until March 31st 2013 by ward areas compared to the same dates for previous year.

Recorded Crime by Ward 01/04/2012 to 31/03/2013	BURMANTOFTS & RICHMOND HILL			GIPTON & HAREHILLS			KILLINGBECK & SEACROFT			INNER EAST		
	Offences	Change	% Change	Offences	Change	% Change	Offences	Change	% Change	Offences	Change	% Change
Burglary Dwelling	266	-113	-25.7%	279	-104	-26.5%	213	-144	-36.2%	734	-327	-31.5%
Burglary Elsewhere	178	-22	-11.0%	170	28	16.1%	178	-57	-36.7%	528	-78	-15.5%
Criminal Damage	538	-41	-7.5%	559	-74	-11.5%	567	-75	-11.1%	1690	-151	-10.2%
Drugs Offences	180	20	11.1%	234	-94	-41.7%	128	8	4.1%	248	-6	-1.1%
Fraud & Forgery	51	15	11.7%	55	3	5.5%	123	58	12.5%	257	86	20.5%
Handling	5	-5	-10.0%	12	-8	-66.7%	4	-11	-75.5%	22	-24	-11.0%
Other Crime	59	-11	-18.7%	59	-30	-50.0%	59	-7	-10.5%	157	-58	-38.5%
Other Theft	554	-156	-20.5%	555	15	2.7%	511	-51	-10.1%	2571	-222	-8.5%
Robbery	52	12	17.1%	90	-4	-4.8%	23	0	0.0%	188	8	1.8%
Sexual Offences	40	10	25.0%	48	18	37.5%	35	2	5.4%	127	25	24.5%
Theft from Motor Vehicle	408	104	24.2%	238	-17	-6.7%	134	8	2.5%	778	20	1.1%
Theft of Motor Vehicle	36	17	24.6%	59	-21	-35.4%	58	28	46.1%	224	24	12.0%
Violent Crime	455	-55	-12.2%	553	-143	-20.5%	358	-70	-19.5%	1410	-178	-15.5%
Recorded Crime Total	2983	-235	-7.3%	3325	-379	-10.2%	2778	-386	-12.2%	9086	-1000	-9.9%

29.3 The below statistics show anti-social behaviour calls recorded by West Yorkshire Police from 1st April 2012 until March 31st 2013 by area committee and further broken down into ward areas. The Inner East area has seen an overall reduction of 25.3% (1396 less incidents reported).

INNER EAST		
Incidents	Change	% Change
4132	-1396	-25.3%

Gipton /Harehills			Burmantofts& Richmond Hill			Killingbeck & Seacroft		
Incidents	Change	% Change	Incidents	Change	% Change	Incidents	Change	% Change
1587	-542	-26.1%	1157	-410	-26.2%	1386	-424	-23.4%

30. Public Confidence and User Satisfaction in the Police (Killingbeck & Seacroft)

Public Confidence	March 2012	March 2013	
Confidence in local policing	58.2%	61.8%	+2.6%
Overall Satisfaction	87.6%	86.0%	-1.6%
Perceptions of ASB increasing	13.7%	13.0%	-0.7%

31. Public Confidence and User Satisfaction in the Police (Gipton & Harehills)

Public Confidence	March 2012	March 2013	
Confidence in local policing	47.9%	42.3%	-5.6%

Overall Satisfaction	85.5%	78.8%	-7.3%
% of residents who think ASB has increased	22.8%	21.5%	-2.3%

32. Public Confidence and User satisfaction in the Police (Burmantofts & Richmond Hill)

Public Confidence	March 2012	March 2013	
Confidence in local policing	51.0%	48.1%	-2.9%
Overall Satisfaction	86.3%	84.1%	-2.2%
% of residents who think ASB has increased	18.1%	20.4%	+2.3%

33. Corporate Consideration

34. Consultation and Engagement

34.1 The North East Divisional Safety partnership works in partnership with the voluntary and community sector and when necessary carries out statutory consultation as appropriate

35. Equality and Diversity / Cohesion and Integration

35.1 Consideration is given to the equality impact of delivering the Safer Leeds strategy across North East Police Division. Where a negative equality impact is identified action will be taken to mitigate the impact or risk.

36. Council Policies and City Priorities

36.1 The North East Divisional community safety partnership delivers directly against The Safer and Stronger Communities Board Partnership plan 2011-2015.

37. Resource and Value for Money

37.1 The work undertaken by the DCSP is underpinned by maximisation of resources through effective partnership work.

38. Legal Implications, Access to Information and Call In

- 38.1 There are no exempt or confidential information contained in this report.
- 38.2 There are no legal implications associated with this report.
- 38.3 There are no key decisions associated with this report, so it is not subject to call in.

39. Risk Management

- 39.1 There are no major risks associated with the content of this report.

40. Conclusions

- 40.1 Overall a very successful year for North East in relation to overall crime reduction, public confidence and increased performance and perceptions in dealing with anti-social behaviour. The DCSP will continue to prioritise burglary dwelling during 2013/14 to ensure reductions are sustained and further improvements are made.

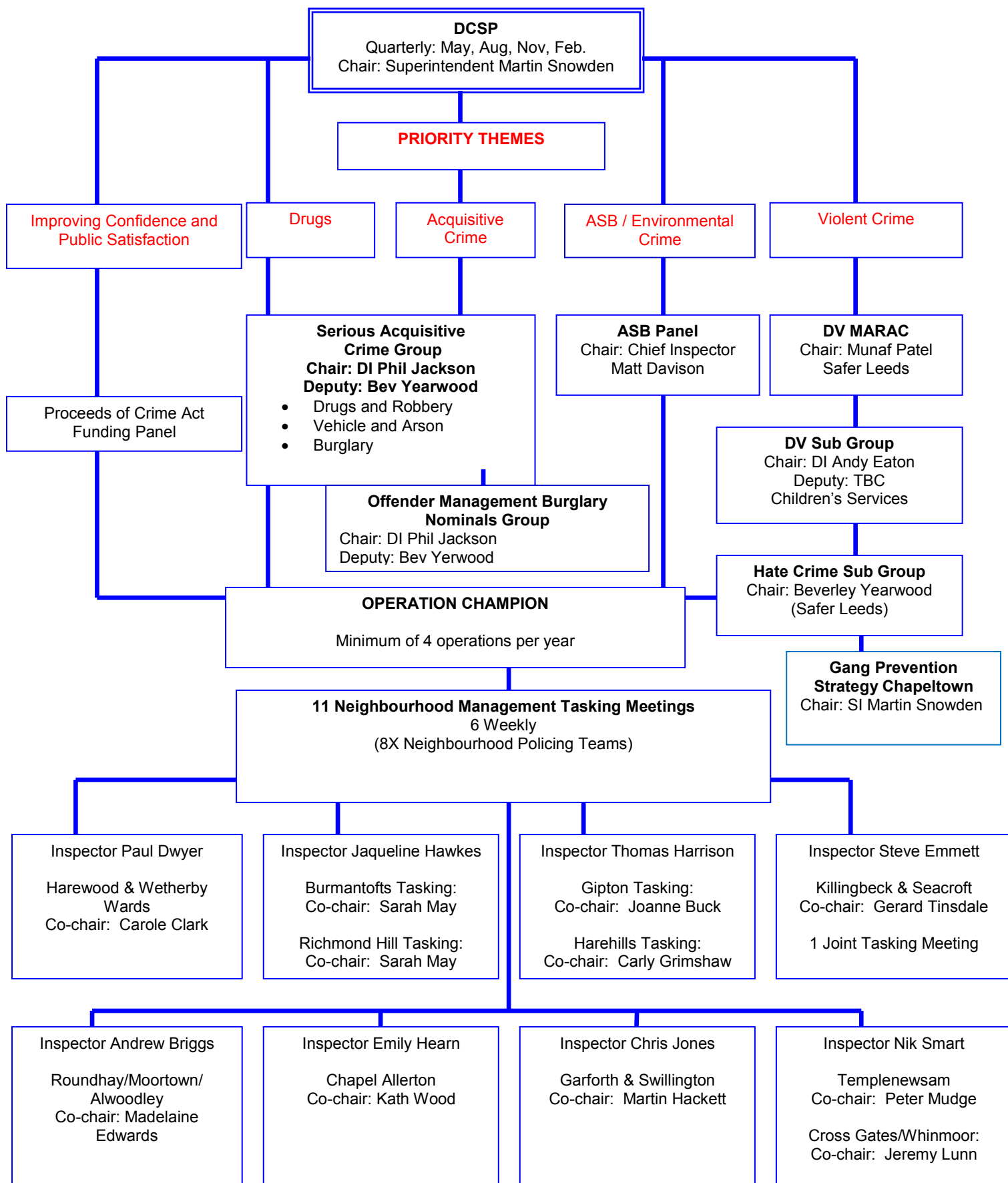
41. Recommendations

- 41.1 Members are asked to continue supporting the Divisional Community Safety Partnership in relation to prioritising and tackling Burglary Dwelling during 2013/14 through partnership work at neighbourhood level.

42. Background Documents

- 42.1 Safer Leeds OBA Burglary Year End Report

North East Division
Divisional Community Safety Partnership



Killingbeck and Seacroft				
POCA Ref	Date	Brief Description	Organisation	Amount Paid
433	15/03/2012	Multi-sport in Killingbeck and Seacroft - project to encourage young people between the ages of 5-13 to improve wellbeing through sports, everyone but especially ethnic minorities	Victor White	£250
465	08/05/2013	Ramshead Jubilee Street Party - 4th June - many organisations will be holding a street party for local residents. Bouncy castles, vintage tea rooms, face painting, jewellery making.	LS14 Trust	£125
466	08/05/2012	Creative Fun - group at Kentmere every Friday night 6-8pm for 14-20yrs who have a variety of additional needs such as autism, aspegers and epilepsy for example. Work alongside Leeds Youth Service and People in Action.	People in Action	£250
468	08/05/2012	South Seacroft Action Group Community Fun Day - Community Funday - Sat 28th July 2012. Free bouncy castles, BBQ stall, information and face painting.	South Seacroft Acion Group	£250
470	08/05/2012	Digital Lounge Community Garden - constructing a garden and leisure area on patch of land. Will benefit all members of the community.	Leeds Princes Trust Team 5	£250
471	08/05/2012	Jubilee Street Party at Ramshead shops - Children's activities, family workshops and a banner.	Bancroft Residents Association	£125
502	19/07/2012	Equipment for Activities - The project is to support disabled and vulnerable ENEHL tenants with the aim to build their confidence and skills.	Inclusive & Active Group	£250
504	23/07/2012	Kick UK - Students to participate in martial arts activities at the Denis Healey Centre on a Thursday from 4pm – 5.30pm. We are looking to provide a stable environment for young people to learn about themselves through the medium of Martial Arts. Young people will have the opportunity to learn about self-defence, structure and discipline to support any behavioural issues they may have.	Euaklyn Griffin/Robert Esterine	£250.00
516	22/08/2012	S.T.A.R Seacroft Taking Action for Regeneration - S.T.A.R are a newly formed voluntary committee who are starting a Community Prize Bingo session at Denis Healey Centre. The aim of the Bingo is to generate money to pay for resources, trips, events for local children.	STAR	£250
522	25/09/2012	Opportunities Inspiring Learning (OIL) - The O.I.L project will aim to deliver education/training and volunteering options to young people aged 14-25+ in a area of the city which is recognised as having high NEET, worklessness and benefit claimants. Leeds 14 is also recognised as having above average young people living in the area.	Opportunities Inspiring Learning	£500
527	26/09/2012	Ramshead Community Halloween Party - LS14 Trust, The Gate Pub, and local businesses are holding RAMSHEAD COMMUNITY HALLOWEEN PARTY Wednesday 31 OCTOBER 2012 – 5.30 TO 7.00 PM - Halloween costume party with refreshments, games, competitions, disco, and face painting.	LS14 Trust	£125
530	09/10/2012	Princes Trust Team 6 Community Project - We are putting together a movie club for the 'over 60's' at Seacroft Good Neighbours Scheme where they can socialise with other people. We are also designing murals on the walls of the room to brighten up the area of entertainment. The planning of the project is	Princes Trust Project Team	£250

		currently underway and we are due to start work on 2nd October. The project will be completed by 21st October.		
534	09/10/2012	South Seacroft Friends and Neighbours Laptop - Staff to work on laptops. 6 years ago 2x laptops were purchased. 1 broke 9 months ago and had to be replaced and the other one has just had temp repair work and in poor condition.	The Methodist Church Hall	£480
550	13/11/2012	Seacroft Frontline Domestic Violence Training - This project will provide 6 sessions of two hours each to local workers and community leaders to help build the skills necessary for sensitive acknowledgement and support for people experiencing domestic violence. The intention is to provide a safe space to work out some of the personal barriers faced by workers broaching this difficult subject and build confidence and skills to help overcome these barriers safely. The training will take place on November 28th and Dec 5th 2012.	Women's Health Matters	£250
551	13/11/2012	Film Furniture Club - To provide a proportion of the furniture required for our new Film Club	North Seacroft Friends and Neighbours	£200
560	18/02/2013	Princes Trust Team 7 Community Project - We are going to decorate a brand new centre for young people aged 14-25 year old. The work will start on Monday 4th February and will be completed by Monday 24th February. It is called O.I.L (Opportunities for Inspiring Learning) and is a place where people can learn mechanic skills.	Princes Trust Project Team	£250
570	25/02/2013	Ramshead Street Party - To promote healthy eating and lifestyles. Free food and drink will be supplied to children and on-going activities.	Barncroft Residents Association	£125
470	08/05/2012	Digital Lounge Community Garden - constructing a garden and leisure area on patch of land. Will benefit all members of the community.	Leeds Princes Trust Team 5	£250

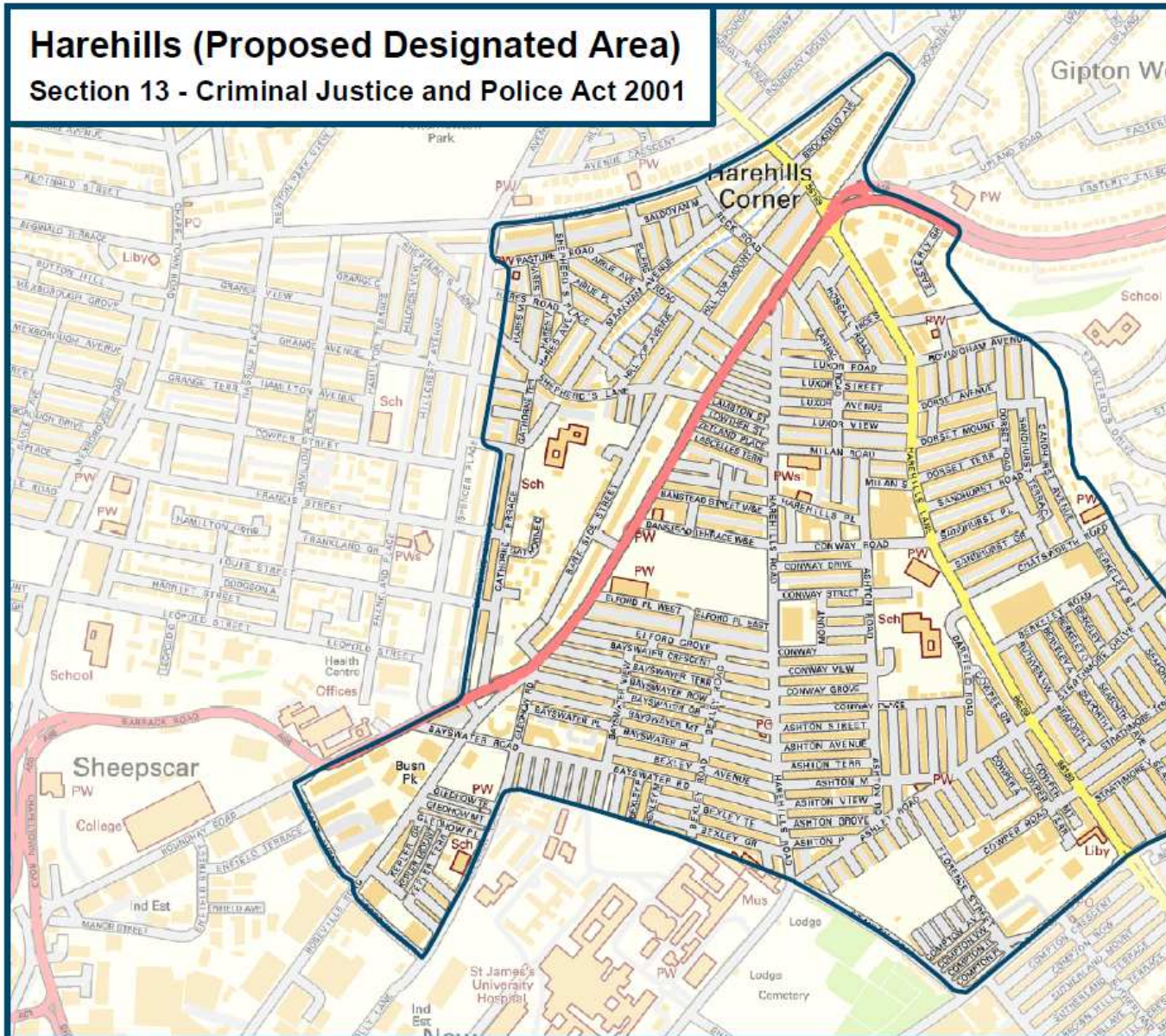
Gipton and Harehills				
POCA Ref	Date	Brief Description	Organisation	Amount Paid
454	19/04/2012	Jubilee Party - would like to hold a jubilee party for all the community on Jubilee day - 06.06.12. For all ages, with food and advertisement.	J. J. Khader	£250
450	10/04/2012	A Royal Garden Party - to take place on 03.06.12. Fun filled with games, egg and spoon, a sack race, fancy dress and refreshments.	Leeds Mencap	£247
475	25/06/2012	Leeds Refugee World Cup 2012 - Refugee week 2012 football tournament and fun event	Refugee Council	£250
485	19/06/2012	Harehills Gardening Group - Gardening club for parents with children attending school. The group brings different parents together also helping parents learn how to grow their own fruit and veg.	Harehills Primary School	£250
494	03/07/2012	Gipton Parents United - Gipton as a community is in the lowest 10% of deprivation at Gipton Children Centre we have a group of local parents who are wanting to help and volunteer at the centre they are very enthusiastic to support fun days and have organised a trip but are needing help with funding transport cost and resources and materials for fun days picnics etc. the group is made up of 88% white British 12% ethnic minority.	Gipton Children's Centre	£250
508	27/07/2012	Projector and Display Screen - As stated the aim of the proposed funding bid is to acquire the funds to purchase the projector and display screen. This equipment will assist greatly and helps the centre to become more interactive when delivering any education, training classes, presentations and community messages, hopefully in the very near future.	Bangladesh Community Centre	£250
532	09/10/2012	KPM Community Outreach Programme - We are seeking support towards our community outreach activities for six weeks (3rd Nov- 8th December). This will allow us to work towards a sharing for Christmas for family and friends as well as other performance opportunities such as a fundraising showcase we are organising in the local area.	Kingdom Performance Ministries	£250
548	13/11/2012	Leeds Children's Circus Winter Show - To deliver a Christmas Show where children who attend our weekly Circus group can showcase all they have learnt throughout the year, to friends and family. The show will also include a surprise performer and refreshments as well as the children's performance. We would like to apply for the grant to help with costs of room hire, some materials, refreshments and the performer. The show is to be held on 11th December 2012.	Leeds Children's Circus	£250
568	18/02/2013	CATCH -We have recently set up our CATCH base in a port-cabin (large enough to accommodate a range of activities for the community in particular the young people). The port-cabin is set out in a classroom format, including a large kitchen area, a one to one room and toilets. It is now referred to as 'The Hub'. The funding will pay for equipment: Table Tennis £95, Nintendo Wii £110, Additional Console £15, Games £30	(CATCH) Community Action To Change Harehills	£250

Burmantofts and Richmond Hill				
POCA Ref	Date	Brief Description	Organisation	Amount Paid
458	08/05/2012	Rugby Cubs - 16 wk rugby sessions in the summer for 3-6yr olds	East Leeds Rugby Club	£250
423	20/02/2012	New Kit Equipment - to replace kit for under 9's	The Leeds Irish Centre RLFC	£250

448	05/04/2012	Shakespeare Primary School Fun Day - Fun day on 15th June, 3-5pm. Parents at school have fundraised towards the day. To encourage family time, the money will pay for urban and stencil arts. Children to create their own piece of graffiti art.	Julie Moron	£240
463	08/05/2012	Young Peoples Club - to run a 2wk young people's club at the end of the summer (May and June). Arts and Crafts session, workshops on citizenship and how to become a good member of society, also healthy eating.	Active 8 Leeds	£250
479	07/06/2012	Torch in the Park Event - to celebrate the Olympic torch passing on 24th June, 3pm. Cricket taster sessions, bowls taster sessions, netball session, wheelchair basketball, rugby etc.	East Leeds Cricket Club	£250
480	07/06/2012	New Kit Equipment - to replace equipment for under 9's - balls, drinks carriers, tackle pads, first aid kits etc.	The Leeds Irish Centre RLFC	£250
484	19/06/2012	Shakespeare Children's Day - Physical play and movement play activities in the park aimed at families who have at least one child under the age of five years.	Shakespeare Children's Centre	£250
487	19/06/2012	Free Community Day - Free outreach and community day for the community in Burmantofts on Sat 18th August 2012 11am - 3pm	St Agnes PCC	£250
488	19/06/2012	Lark in the Park - Lark in the Park 21st July 2012 Zest's role is to provide a henna artist, give out free water and fruit and provide children's races.	Zest Health for Life	£250
490	03/07/2012	Boxercise with shadow - We aim to run a pilot session of boxercise with "Shadow" (John Keenan - former boxer) for young people as part of our summer activities programme on the 7th August 2012. This is with the view to run regular classes starting in September. These sessions would target young people with behavioural problems. As well as exercise the sessions would offer advice on subjects such as avoiding conflict, conflict resolution, self-control, self-esteem, respect and anger management. John has a lot of experience of working with young people and he has trained with some of the top boxers including Prince Naseem. Extended Schools Services for the Inner East Cluster are providing refreshments for the session and this session will be advertised as part of the summer activities programme for the cluster.	Hope Families	£250
507	26/07/2012	Burmantofts Friendship Group Celebration of 14 years - On 27th September, the Friendship Group will have been running for 14 years with 2 founder members still attending. The group would like to celebrate such an achievement by having a lunch out. The group are self-funded and have their own bank account which is overseen by Burmantofts Senior Action. If the group are lucky with the funding, please can the money be paid direct to the group (bank details are given), if not BSA will be happy to take responsibility.	Burmantofts Senior Action (BSA)	£120
510	06/08/2012	Junior Rugby Equipment - The club would like to purchase some training equipment for use by the junior teams of East Leeds and as a resource for the community if required.	East Leeds Rugby Under 13 All Stars	£250
511	06/08/2012	Chester Zoo Trip 31 August 2012 - To take families from Richmond Hill/Burmantofts to Chester Zoo.	Zest Health for Life	£500
514	22/08/2012	Ebor Gardens Advice Centre - Providing money advice, debt casework & income maximisation service to the community of burmantofts & the wider Leeds Area.	Ebor Gardens Advice Centre	£250

521	25/09/2012	Communication and Publicity - BSA is a charity that supports older people to live independently in their own homes. A number of events are planned throughout the year and people who attend these events like to have a photograph taken with their friends. Also a camera is essential for production of publicity materials and pictures of the area. On trips, the member of staff who goes will give out a mobile telephone number in case of emergency which is usually their own, this is not good practice. A pay as you go mobile will be used by the worker for all events and also for contacting other agencies who only use mobile phones thus minimising the telephone costs to the charity. BSA would like a digital camera and an office mobile telephone for such events.	Burmantofts Senior Action (BSA)	£250
531	09/10/2012	Equipment for Burmantofts Community Nursery - This funding if secured would enable the nursery to purchase bamboo mesh screening to enclose the nursery's garden/play area.	Burmantofts Community Nursery	£500
535	16/10/2012	Trick or Treat Halloween Party - Leeds Mencap's Halloween party will be taking place on Saturday 27th October between 5-7pm. The event will be an inclusive event with a fun filled itinerary for all the family to enjoy including: party games, disco, a dance workshop, ghost stories, arts and crafts, face painting, children's tombola, and tasty Halloween treats.	Leeds Mencap	£250
543	02/11/2012	Stoney Rock Court Sheltered Housing Activities - The tenants group are applying for funding to develop a programme of activities for residents of Stony Rock Sheltered Housing Complex. We want to reduce the isolation of residents living at the centre and create a greater sense of community. We have consulted residents who have informed the residents group they would like: <ul style="list-style-type: none"> • Cards afternoon/evening • Dominos Afternoon/evening • Board games afternoon/evening 	Stoney Rock Court Residents Association	£332
584	25/03/2013	Pyramid of Arts High Support Sound and Sensory Group - Pyramid of Arts run weekly collaborative arts groups for people with and without learning disabilities, including a Sound and Sensory High Support Group for people with profound and multiple disabilities, who meet at St Agnes Church in Burmantofts. The group runs on a Tuesday afternoon from 1 – 3pm every week during term time. The participants of the Sound and Sensory High Support Group.	Pyramid of Arts	£248

Harehills (Proposed Designated Area) Section 13 - Criminal Justice and Police Act 2001



PRODUCED BY LEEDS CITY COUNCIL

This map is based upon the Ordnance Survey's Digital Data with the permission of the Ordnance Survey on behalf of the Controller of Her Majesty's Stationery Office
© Unauthorised reproduction infringes Crown Copyright and may lead to prosecution or civil proceedings © Crown Copyright. All rights reserved. Leeds City Council O.S. Licence No. 100018667 (2012)